

# “On Mission Together”

**Saskatchewan Conference of MB Churches**

## Director’s Calendar

### May

9 – Pastor Cluster (Swift Current)  
11 – Pastor Cluster (Regina)  
12-16 – B.C. NMT/NFLT  
24 – SKMB Ex. Bd. Mtg.  
28 – Grace Community Church (Herbert)  
26 – Anchor Church (Regina)  
27-30 – B.C. PCO

### June

3 – Northwest Community Church  
(Meadow Lake)  
9 – Philadelphia MB Church (Watrous)  
13 – CCMBC AGM  
23 – Hafford Gospel Fellowship  
24 – SKMB Ex. Bd. Mtg.  
28-30 – Revival Conference – African  
Churches (Regina)

### July

7 – Grace Fellowship (Saskatoon) /  
Hibrets Church  
21 – The Gathering Church (Saskatoon)  
28 – Christian Fellowship church  
(Lanigan)

***Please pray for traveling mercies.***



Our national Faith & Life Team has been working on defining the characteristics of a healthy church. This draft outcome-based measure can be used by the local church for goal setting, assessment, and teaching. We will share this definition with pastors at the May pastor clusters and invite their feedback. We also welcome feedback from congregations. Email [phil@skmb.ca](mailto:phil@skmb.ca)

1. A healthy church loves and worships God (Father, Son and Holy Spirit).
2. A healthy church values and promotes Christlike character development – love, joy, peace, patience, kindness, goodness, faithfulness, gentleness, and self-control.
3. A healthy church is biblically anchored, kingdom minded, gospel centered, prayer focused, and Spirit led.[1]
4. A healthy church preaches and teaches the great story of God from Genesis to Revelation.
5. A healthy church is united around its core theological, ethical, and missional convictions.
6. A healthy church identifies, calls and raises up godly leaders.
7. A healthy church carries out the Great Commission with a Great Commandment posture.

### Director of Ministry

Rev. Philip A. Gunther

Call or text:

**306-533-6191**

Email: [phil@skmb.ca](mailto:phil@skmb.ca)

604 Webster St.

Saskatoon SK S7N 3P9

### Website & News Letter

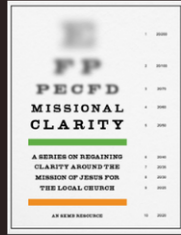
Administrator

Heather Filazek

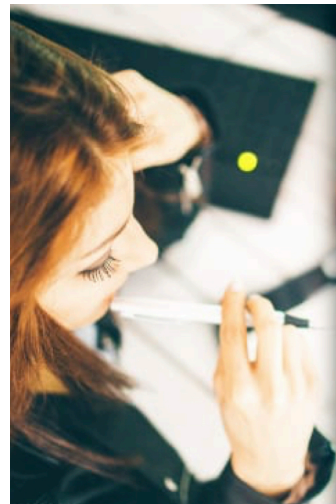
Email: [office@skmb.ca](mailto:office@skmb.ca)

[1] For the purpose of this work, a kingdom-minded church believes that God’s mission and ministry are worldwide and to be carried out in collaboration with other gospel-centered faith communities and ministries. It understands that its support (encouragement and prayer) and its resources (human and material) are a shared stewardship for Great Commission efforts.

**AVAILABLE NOW**



RESOURCES TO  
EQUIP THE CHURCH



How to  
Make Room  
for More  
Female  
Leaders



MELISSA MASHBURN



Banff Park Lodge, Oct 21 - 24, 2024

ABMB  
SKMB

**Banff Retreat 2024**

*For Pastors, Ministry Leaders and Spouses*

Reboot.  
Recharge.  
Revive.



Online registration is open. Deadline is May 31st

**SKMB provides financial support when needed.**

**Supporting SKMB Churches and Camps in Making Disciples**